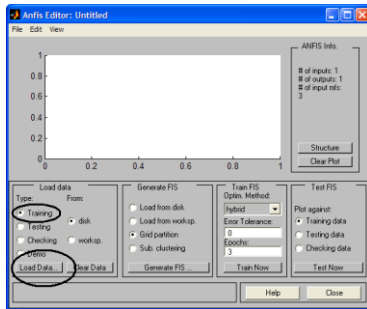
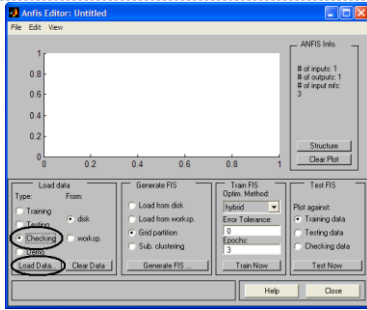


- ▶ Input training data by select **Training** option at the **Load Data** frame, then push **Load Data** button.
- ▶ Browse and choose datatraining.dat



- ▶ Input checking data by select **Checking** option at the **Load Data** frame, then push **Load Data** button.
- ▶ Browse and choose datachecking.dat

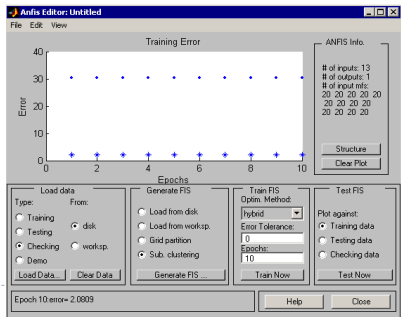




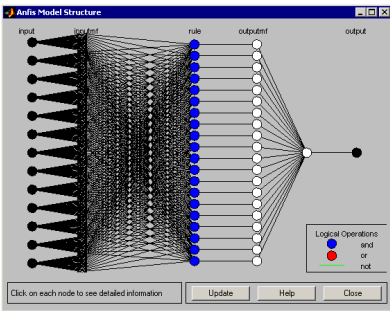
- ▶ Choose **Sub.Clustering** option at the **Generate FIS** frame, then push **Generate FIS** button.
- ▶ In the *parameter for clustering genfis* dialog box, set this value :
 - ▶ Range of influence : 0.5
 - ▶ Squah factor : 1.25
 - ▶ Accept ratio : 0.5
 - ▶ Reject ratio : 0.15

- ▶ Choose hybrid method
- ▶ Error Tolerance = 0 ,
- ▶ Epoch = 10, then push **Train Now** button .

▶ Epoch = 10 , error = 2.0809



The Structure



▶ Choose **training data** option at **Test FIS** frame, then **Test Now**

